

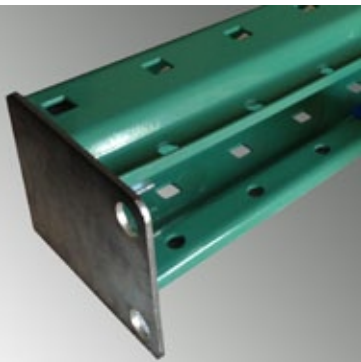
Next Level Rack is Quick and Easy to Assemble, Flexible and Engineered for Performance



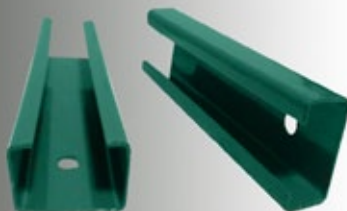
Next Level Beams have a solid tubular design with a true 1-5/8" step. Beams are available in 16, 15 & 14 gauge (3 or 4 pin) and are powder coated for durability. Universal connectors make it compatible with most teardrop rack on the market today.



Upright frames have true 3" x 3" columns and teardrop punching on 2" centers. With heights up to 38' and gauges from 16-11, we can meet any requirement, including seismic. If you need it, we can make it.



Our patent pending no-weld base plate that looks and acts like a welded plate has a simple 3 part construction (welded nut, washer & bolt) for quick and easy assembly. Dimples in the plate lock the baseplate and columns into position, further easing assembly (base plate can be welded if desired).



Our hefty closed-lip U-bracing is far more powerful than most common C-bracing and it's *multi-sized*, enabling you to easily customize rack depths. Additionally, our frames boast three horizontal braces for extreme strength (make that four for frames over 18') and durability.

**Brace finish is actually pre-galvanized steel but is shown in color for presentation purposes.*

Fast, Easy Assembly

Save money by shipping KD and know that our true 3" posts are straight, not wedge-shaped, allowing the braces to slip in with ease--no wedging required. The freight savings usually far outweigh the cost of assembly, but frames can be pre-assembled for a small fee. And you will *never* have to worry about the bolts loosening--even if shipped assembled.

Galvanized Steel

Next Level's braces and base plates are constructed of galvanized steel (braces are pre-galvanized and plates are hot-dipped galvanized), so there is no rusting or chipping like with painted alternatives, plus they brighten the warehouse for better visibility. Posts are powder-coated but may be ordered in a pre-galvanized finish for little to no extra charge.

Flexibility

With easy, bolted assembly, heights up to 38' feet and multi-sized bracing, stocking dealers can easily and quickly meet your immediate requirements.

Quick Ship

Our goal is to have the *largest and deepest Quick Ship in the country*, including 32' frames. We are starting with the basics, but plan to add new items regularly. Please let us know what you would like to see in a quick ship program.

Our Base Plate & Rack Repair



Our hot-dipped galvanized base plate is virtually labor free and is a real benefit for rack repair--replacements can be made in the field with merely a ratchet and band saw. Standard and seismic plates are both available through Quick Ship as well as production orders.